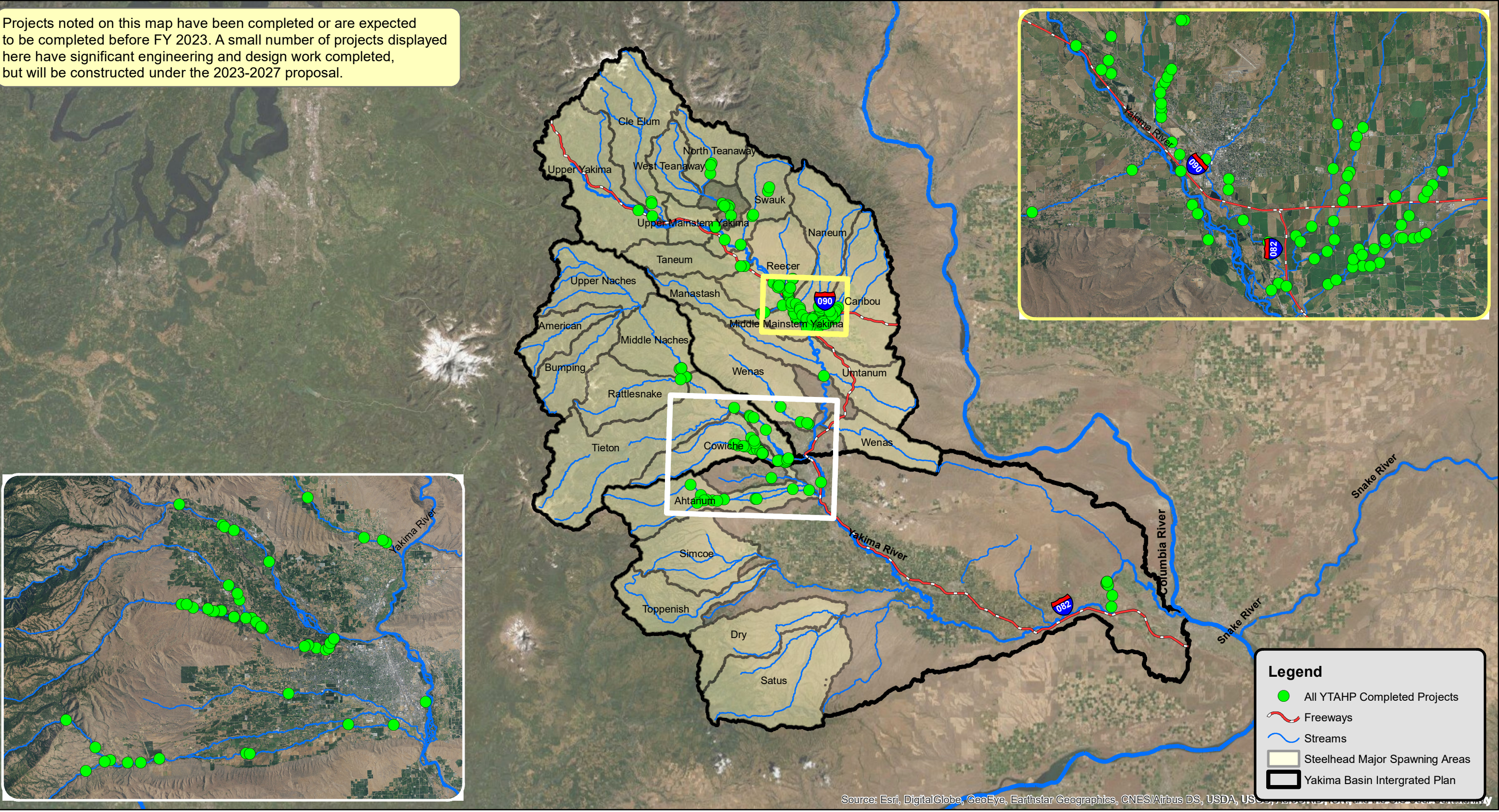


# 2007-398-00 YAKIMA TRIBUTARY ACCESS & HABITAT PROGRAM

## Accomplishments 2002 to Present

Projects noted on this map have been completed or are expected to be completed before FY 2023. A small number of projects displayed here have significant engineering and design work completed, but will be constructed under the 2023-2027 proposal.



Source: Esri, DigitalGlobe, GeoEye, Earthstar Geographics, CNES/Airbus DS, USDA, USGS, AeroGRID, IGN, and the GIS User Community

